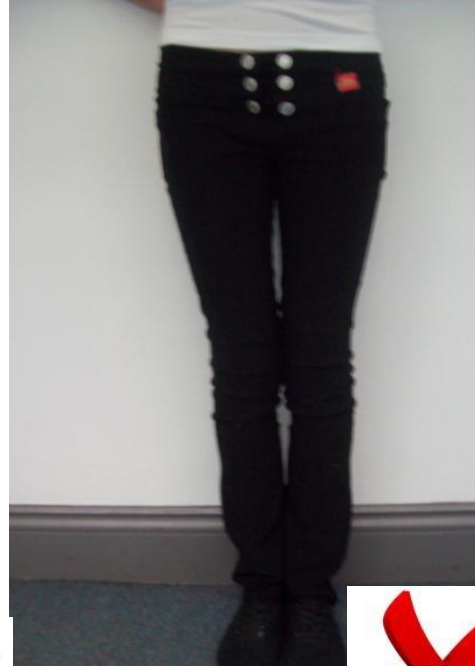


Acceptable Black Trousers – Tailored, Straight Leg or Bootleg



No external zips, studs, buttons, labels, visible stitching or patch pockets. Typically polyester or viscose fabrics – not denim or cotton which fades

Unacceptable Trousers



No dark jeans or chinos, no skinny or tight trousers or jeggings. No shorts, cropped trousers or ankle grazers.

Acceptable Black Skirts - Knee Length Straight, A line or Pleated



No external zips, studs, labels or patch pockets. Typically polyester or viscose fabrics – not denim or cotton which fades

Unacceptable Skirts



Stretchy skirts are allowed but they must be a suitable length, not short as above

Acceptable Girls' Shoes



Leather or leather-look school shoes

Unacceptable Girls' Shoes



No canvas shoes, trainers or boots, no brand logos
(Converse, Vanns, etc)

Acceptable Boys' Shoes



Leather or leather-look school shoes

Unacceptable Boys' Shoes



No canvas shoes, trainers or boots, no brand logos (Converse, Vanns, etc)

Jewellery - Single Stud Earrings Only

