

Next Two Weeks

Wednesday 29th January to Saturday 1st February	Shrek Musical - Performances & times:
	29 th Jan 5:30pm (relaxed performance)
	30 th and 31 st Jan 7:30pm
	1 st Feb 2:00pm (matinee family performance) and 7:30pm evening performance
	Ticket prices: £6/ £4 concessions
	Link for tickets: https://www.seaty.co.uk/ashbyshrek

Pastoral & Safeguarding Updates

Attendance - Please email

yearteamabsences@ashbyschool.org.uk on each day of absence if your child is absent from school. We cannot assume they are still unwell from the previous day.

Please can we ask that students are not kept off school for a whole day for medical appointments such as routine dental checks as this impacts on their overall attendance.

Rewards - We have recently updated our Rewards Scheme for Students and you can read more information [here](#).

Other Information

NHS Parent Wellbeing Letter - Please find the latest NHS Parent Wellbeing Letter [here](#).

Pharmacy First - This service enables children and adults to get quick access to healthcare advice as they can walk in to a pharmacy to access it (some pharmacies also offer a remote video consultation). More information can be found at nhs.uk/thinkpharmacyfirst.

Other Key Dates

3rd - 9th	Children's Mental Health Week
13th February	School Early Finish 2pm
17th - 21st February	February Half Term

In Our Classrooms

Curriculum - A reminder of what students will be learning in their subjects during this half term to support them to become **Empowered to Learn** and know that **Anything is Possible**.

[Year 7](#)

[Year 8](#)

[Year 9](#)

Extra - Curricular

Extra - Curricular - Our PE Extra curricular timetable has been updated. Please view it [here](#).

Operations Updates

Lost Property - We currently have a lot of Lost Property in reception including School uniform. If your child has any property or uniform that has been lost, please ask them to come to reception to see if we have it here.

IMPORTANT SAFETY REMINDER - Dropping

Students off at school - For the safety of all Students and Parents/Carers, please can we remind you to either park in one of the visitor bays at the front of our main reception, or to pull into the car park to allow your child to get out safely. Please use the marked walkway, taking them to reception, where they must sign in with the reason for being late. Please do not stop in the driveway to drop off your child as this can be dangerous when other cars are also driving in and out.

Enquiry Form - Our new and improved [enquiry form](#) is now live. Please select our child's year group and what the enquiry relates to so that it can be directed to the relevant person.

What's been happening...

Year 7 Futsal

On the 8th January we took 7 enthusiastic girls to the Year 7 Futsal competition, supported by Mr Watt. We played against Castle Rock and Ivanhoe, hosted by Ivanhoe in their Sports Hall. The games were nine minutes long, with the winning team going through to the next round.

Game 1 - Ivanhoe 0 - Ashby 6 Game 2 - Castle Rock 2 - Ashby 1

Congratulations to Castle Rock, who go through as NWL champions with us as a close second, losing out by only 1 goal.



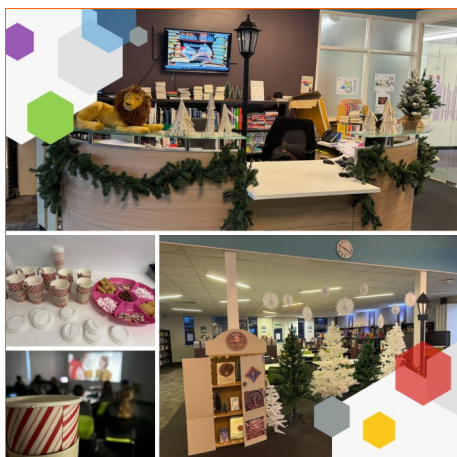
Ashby Museum - Items on Loan

Last Term we agreed for some of our historical items to be loaned to Ashby Museum for them to display so that our community can appreciate them. These items include the old Oak Headmaster's Chair, Sports Plaques, Pictures, some old boarding house photographs and also some papers for the museum team to undertake some research. The Museum included a feature of this in the Ashby Life magazine, which can be [viewed here](#).



Year 8 Netball

Ashby school played Loughborough High school in an away match at their beautiful facilities and with two amazing umpires (our very own Mrs G-C was incredible!). Thank you to the Loughborough Lightning player who kindly had a photo with the girls as they were very excited and a little bit in awe that she was there. Meeting an idol plus WINNING the Semi-final match 14-10, meant that the girls not only had a fantastic time but they are also off to Loughborough University to play in the FINAL in the next couple of weeks! A couple of changes were made throughout the game with everyone giving 110%, but the player of the match (chosen by the opposition) was Emily Washington in the position of Goal shooter. Well done girls!



Library Activities Last Half Term

The KS3 Book Club had been reading *The Lion*, *The Witch* and *The Wardrobe* so the Library was turned into Narnia for December, complete with paper snowflakes and trees made from damaged books, and even a lamp-post and Aslan the lion!

Then at the final Book Club of the year they watched the film version with hot chocolate and treats.

Senior Citizens Carol Concert

On Tuesday 17th December we held our annual Senior Citizens Carol Concert in our Theatre. Our very talented Students performed a variety of festive Christmas songs, and other musical numbers in different performance groups. We had our Orchestra, Jazz Band, Choir and some individual performances as well. Our refreshments were very kindly donated by Pladis which were thoroughly enjoyed after the concert by everyone that had come to enjoy the festive afternoon.

