

New Year 7 Welcome Pack 2025/26

Your Transition to Ashby School



Anything is Possible



Welcome

to Ashby School



Dear Year 6

We are delighted that you have chosen to come to Ashby School for your secondary education and to be part of our Year 7! The move to secondary school can often seem a bit nerve-racking but it is also a really exciting time. Our teachers are working really hard reviewing your lessons ready for next year and we know you will be excited about learning different subjects with specialist teachers in our purpose built rooms. We also have lots of plans around supporting you to settle in really well, to find your way around and to make sure you are really happy at Ashby School.

To help you to settle in and to make sure that you are really confident about your school move before the summer holidays, we are inviting you to a transition day in July. This will give you chance to meet the staff who will be working with Year 7, experience some lessons, meet some of your classmates and start to find out about things like how to get your lunch. We will also have a parent meeting around this time so your parents and carers can ask any questions as well. I know that with our current Year 7s this has really helped and given new students a chance to ask all the questions they have, so make sure you make a note of anything you want to know so you definitely remember to ask.

Over the following weeks, as part of your transition from primary to secondary school, we would like you to complete this booklet. It is full of information and activities to help you prepare for Year 7. We'll be sharing tips with your families so that they can help you to work through the booklet at your own pace. You have plenty of time so there's no need to rush through the activities. We will also be updating our Y7 transition page at www.ashbyschool.org.uk with information as we near the end of the summer term – keep checking it for new details! We can't wait to meet you all on your transition day in the Summer term and for you to be Ashby students in August. Until then, have a lovely summer holiday.

Best wishes
Dr Mellor
Headteacher - Ashby School

Anything is Possible

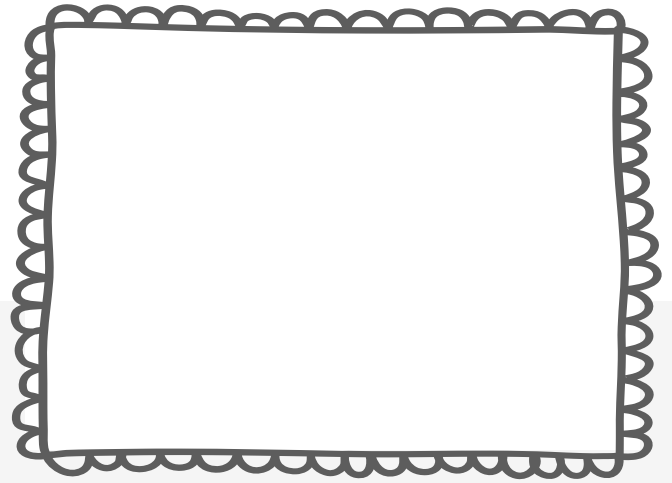
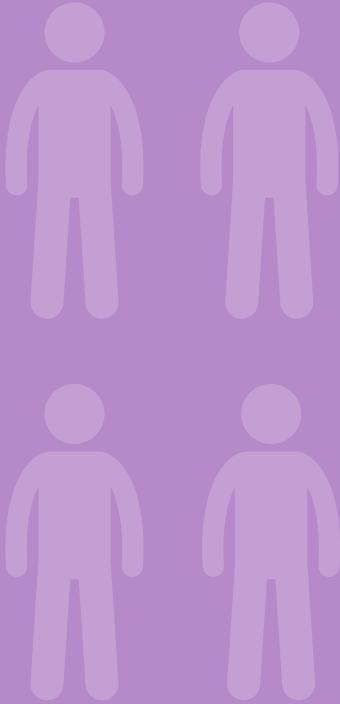
Contents

- 2. Welcome to Ashby School
- 3. Contents
- 4. All about me
- 6. How I feel about starting secondary school
- 8. This is my support network
- 10. Concerned? ...or Confident?
- 12. My morning routine
- 14. How will you travel to school?
- 16. What will my uniform look like?
- 18. What will my timetable look like?
- 20. School meals at Ashby
- 22. The school website
- 24. Managing tricky situations
- 26. Question time



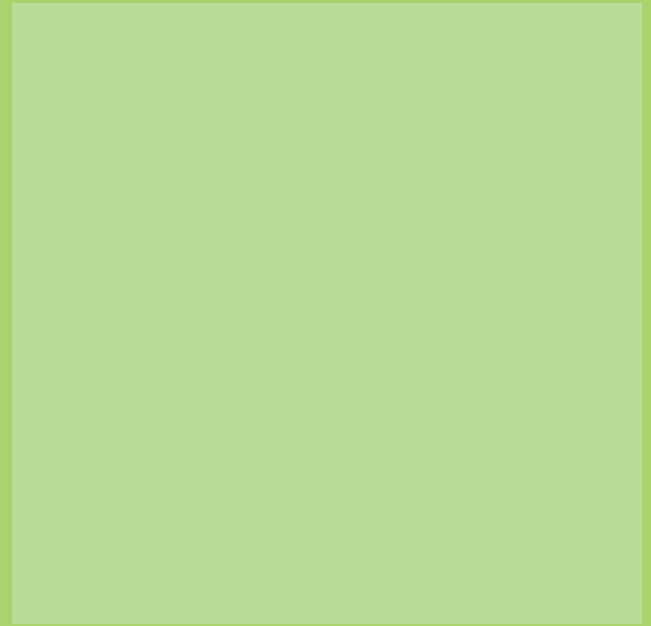
This is me!

The people I live with...



Draw a picture of yourself here...

My hobbies are...



My family
originates from...



My hobbies are...

Anything is Possible

My name is:

My birthday is:

Things I am good at are...

My hero is...

Things in life I like...

Things in life I dislike...

I need a little help with...

The person in my family I look up to and listen to the most...



How I feel

about starting secondary school



Things I want my teachers to know about me...

I am happiest when...

I am most relaxed when...

Anything is Possible



These are the things that help me to learn...

A large, empty rectangular area with a light blue background, intended for students to write their responses to the prompt above.

I am most looking forward to...

A rectangular area with a pink background, intended for students to write their responses to the prompt above.

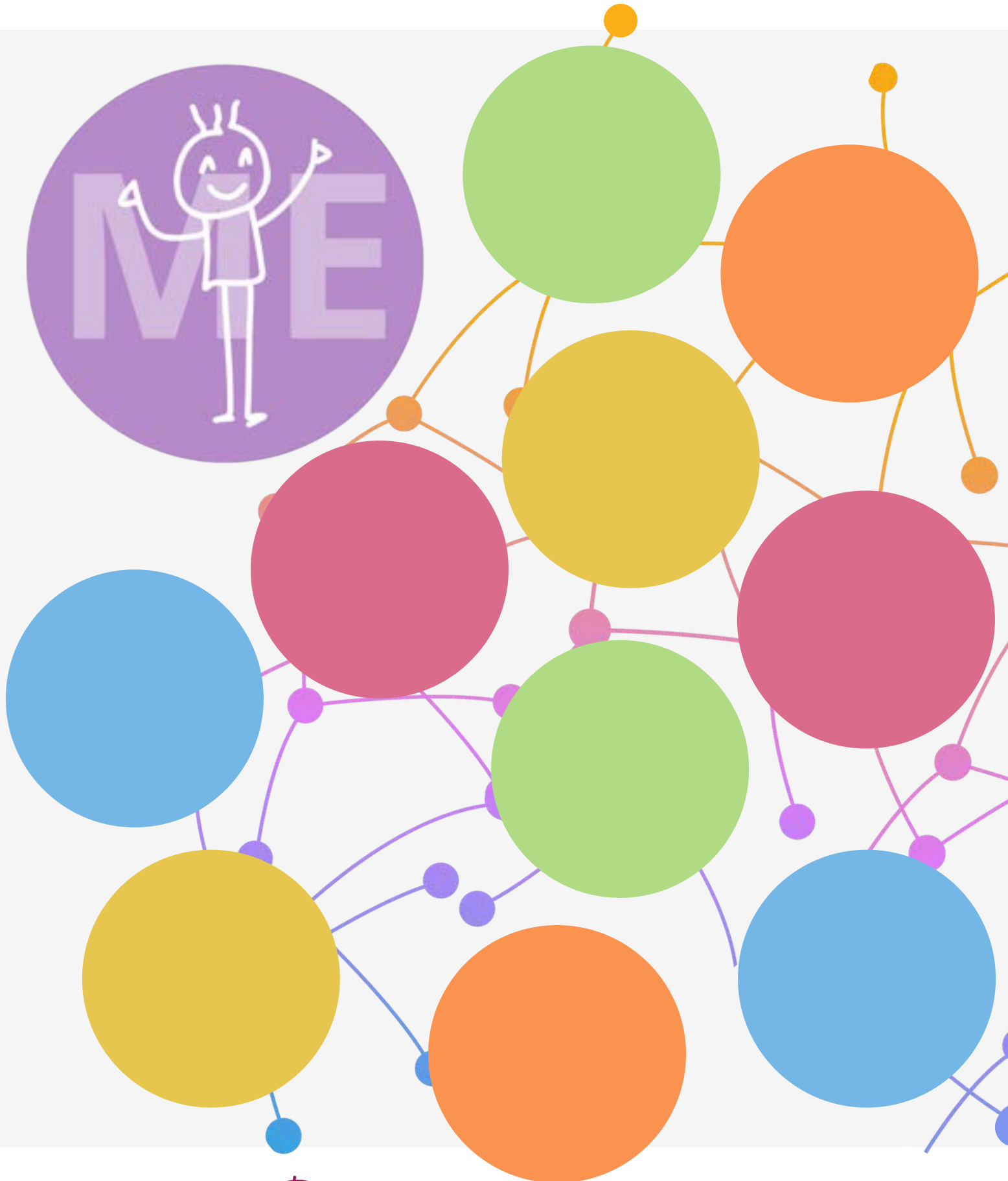
The subject I am most looking forward to is...

A rectangular area with an orange background, intended for students to write their responses to the prompt above.

I am most worried about...

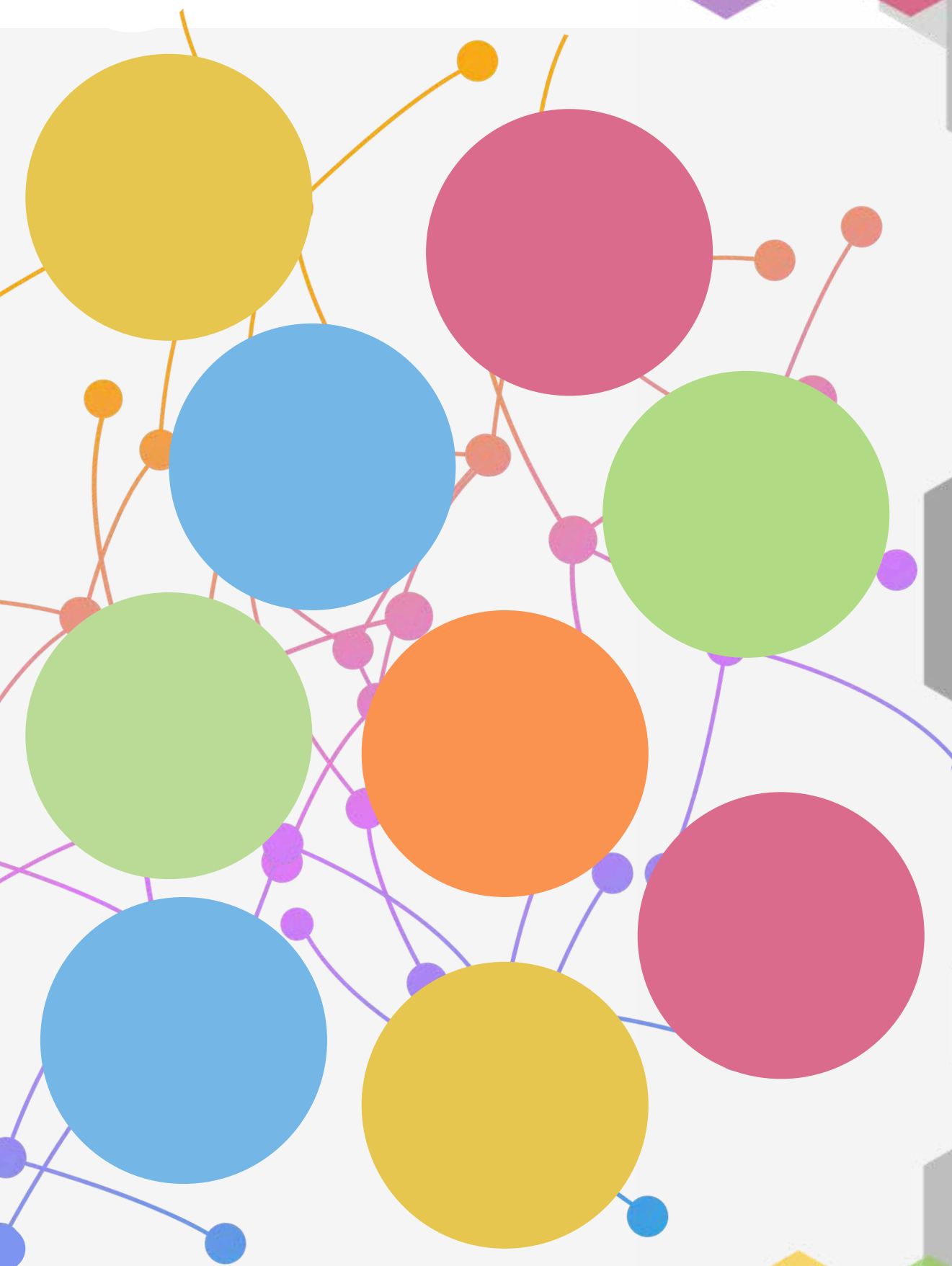
A rectangular area with a purple background, intended for students to write their responses to the prompt above.

This is my *Support Network*



Anything is *Possible*

Tell us who supports you. This could be your parents, sports coach, Year 6 teacher, Grandma, sibling etc. The closer they are to your “ME” circle the more important they are to you...



Concerned?

...or *Confident!*



Use two different coloured highlighters.

Use one colour to highlight things you are worried about ☐

Use the other colour to highlight things you aren't worried about ☐

Learning
new
subjects

Break
time

Finding my
way
around

Managing a
timetable

Being on
time

Lunch time

Having
a different
uniform

Getting
to school

Being with
older
students

Anything is *Possible*



Making
new
friends

Meeting
my new
teachers

Getting
changed
for PE

Homework

Being
with
my friends

Joining
clubs

Managing my
cashless
card to
pay for lunch

Being able
to do
the work

School
rules

Meeting
my new
tutor





My Morning routine

Moving school can mean you need to rethink your morning routine. Think about your new morning and put them in the correct order:

Activity	Time Order 1-10
Get dressed into your Ashby School uniform- don't forget your tie!	
Check you have your pencil case	
Check your timetable	
Check you have put your homework in your bag	
Say 'Goodbye' to people/pets at home	
Wake up	
Eat your breakfast	
Leave for school	
Wash	
Brush teeth	

I will need to get up at:

Who will check I am ready for school:

Now plan your new morning routine with approximate times

Time	Activity



How will you

travel to school?



Can you travel
with a friend
or sibling?



What time
will you
leave
home?

If you are on
the bus, do you
know where
the stop is?

Anything is Possible




If you are walking, do you know the route?



What time will you arrive at school?



It is important that you plan your journey to school so that you get there on time. If you can, practise the walk to the bus stop or from your house to school if you are walking. If you can't, look at your route using an application like Google Maps. You will need to leave plenty of time to get to school each day. Remember, our Breakfast Club opens in the Dining Room from 8:20am each morning for those students who wish to use it.



What will my

Uniform

look like?



What will I need?

Blazer/ V neck school jumper with Ashby logo

Plain white shirts (long or short sleeved)

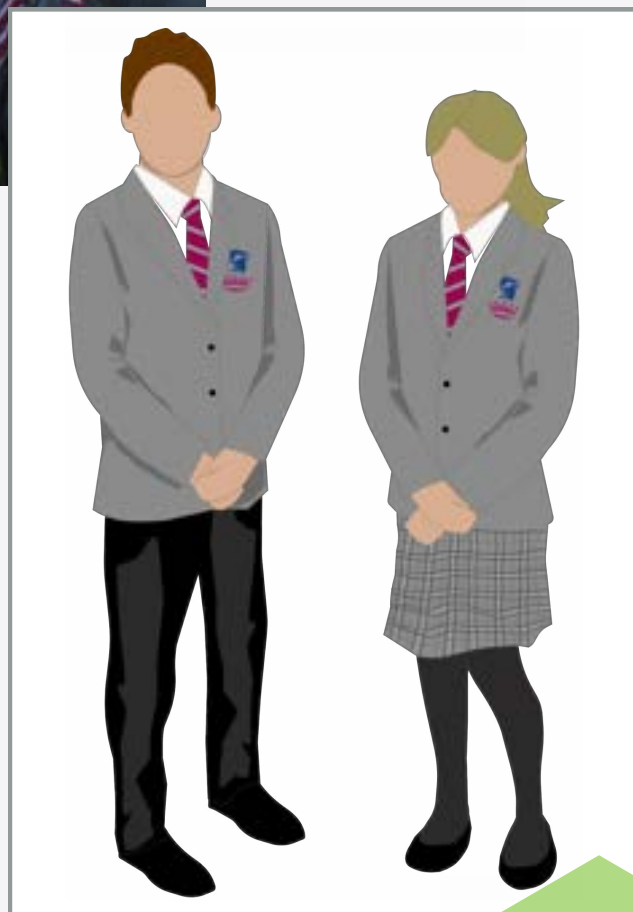
Ashby School tie

Black trousers or Pendle Tartan pleated skirt

Black or grey socks or black tights

Plain black shoes

PE top (Ashby)



Anything is Possible

Ashby School has a strict uniform policy and all students are expected to adhere to it.

A copy of the school uniform policy and further information can be found on our website www.ashbyschool.org.uk

Ashby uniform can be bought from several stockists including Ashby School Wear, Pupil School Wear and Liss Sports.

PE wear - For Key Stage 3

- Ashby PE top
- PE Plain Black sweatshirt – any logo must be small enough to be covered with a lanyard card
- PE black shorts/skort/joggers/running legging.
- Black football socks OR white sport socks.
- Suitable footwear



Use the information on both these pages and on the website to find the answers to the following:

1. What colour trousers do students wear at Ashby School?
2. Do you have to wear a school jumper?
3. What footwear is allowed at Ashby School?
4. What colour is the PE kit at Ashby School?
5. Can you wear earrings at Ashby School?
6. What are the rules on facial piercings at Ashby School?
7. What are the rules on hair colour?
8. Where can you find more information about the Ashby School uniform?
9. Can you bring hoodies to Ashby School?
10. Where can you buy uniform items from?

What will my *Timetable* look like?

This is what a typical week at Ashby School might look like for Year 7 at Ashby School. You will be given a printed copy of your timetable when you arrive and staff will help you to get where you need to be at the right time!

Use the information on this page to find the answers to the following:

1. What time does school start in the morning?
2. Which room does Mr Evans teach in?
3. How many times is English taught this week?
4. How many teachers does this student have for Humanities?
5. Where will the student be at 9:15?
6. What lesson happens in classroom A4?
7. What time is break?
8. Which day(s) does this student need to bring their PE kit to school?
9. How long is lunchtime?
10. What time does school end?

The Ashby School Day

Registration	08:40 - 09:00
Movement	5 minutes
Lesson One	09:05 - 10:05
Lesson Two	10:05 - 11:05
Break	11:05 - 11:25
Lesson Three	11:25 - 12:25
Lunch	12:25 - 13:05
Lesson Four	13:05 - 14:05
Movement	5 minutes
Lesson Five	14:10 - 15:10

*All information correct at time of printing



Anything is *Possible*

	MON	TUES	WED	THURS	FRI
AM	7A L2 Mr M Newton	7A L2 Mr M Newton	7A L2 Mr M Newton	7A L2 Mr M Newton	7A L2 Mr M Newton
LESSON ONE	Arts 71Ar1 A4 Mr T Allcroft	Empowering to Learn 71ET1 E2LA Mr M Newton	Modern Languages 71MI1 L2 Mrs S Dunn	English 71En1 E3 Miss B Keating- Rogers	English 71En1 E3 Miss B Keating- Rogers
LESSON TWO	Humanities 71Hu3 H3 Mrs V Baxter	English 71En1 E3 Miss B Keating- Rogers	Physical Education 71Pe2 Sp Hall Mr G Soszynski	Design 71Dn2 D2 Mr B Evans	Maths 71Ma2 M2 Mr A Weston
LESSON THREE	Maths 71Ma2 M2 Mr A Weston	Humanities 71Hu3 H3 Mr D Clewett	Science 71Sc3 S10 Mrs V Hamnett	Science 71Sc3 S10 Mrs V Hamnett	Arts 71Ar1 A4 Mr T Allcroft
LESSON FOUR	Science 71Sc3 S10 Mrs V Hamnett	Modern Languages 71MI1 L2 Mrs S Dunn	Design 71Dn2 D2 Mr B Evans	Physical Education 71Pe2 Sp Hall Mr G Soszynski	Empowering to Learn 71ET1 E2LA Mr M Newton
LESSON FIVE	Design 71Dn2 D2 Mr B Evans	Arts 71Ar1 A4 Mr T Allcroft	English 71En1 E3 Miss B Keating- Rogers	Maths 71Ma2 M2 Mr A Weston	Humanities 71Hu3 H3 Mr D Clewett

Lesson

Room

Teacher



School meals



This is an example of the menu at Ashby. Can you use it to plan what you might eat each day? Aim to spend £3.00 per day. Don't forget to eat healthily and budget your money wisely! Remember, you can also bring your own lunch to school and eat this in our Dining Room or in one of our outdoor covered areas.

BREAKTIME MENU

Fresh fruit 40p
Toasted teacake 60p
Pizza slice 60p
Assorted Toasties £1.05- £1.45
Bacon Cob £1.20
Bacon Muffin £1.40
Assorted drinks 60p to 85p

In most schools, Free School Meal allowances are used to provide lunch, but at Ashby where lunch is a little later in the school day, students are also allowed to use the money to purchase items at break.

SCHOOL LUNCH MENU

Selection of cold cobs/baguettes £1.05–£2.20

Tomato pasta £1.50

Hot Panini £1.80 – £2.20

Hot Main Course item £1.50

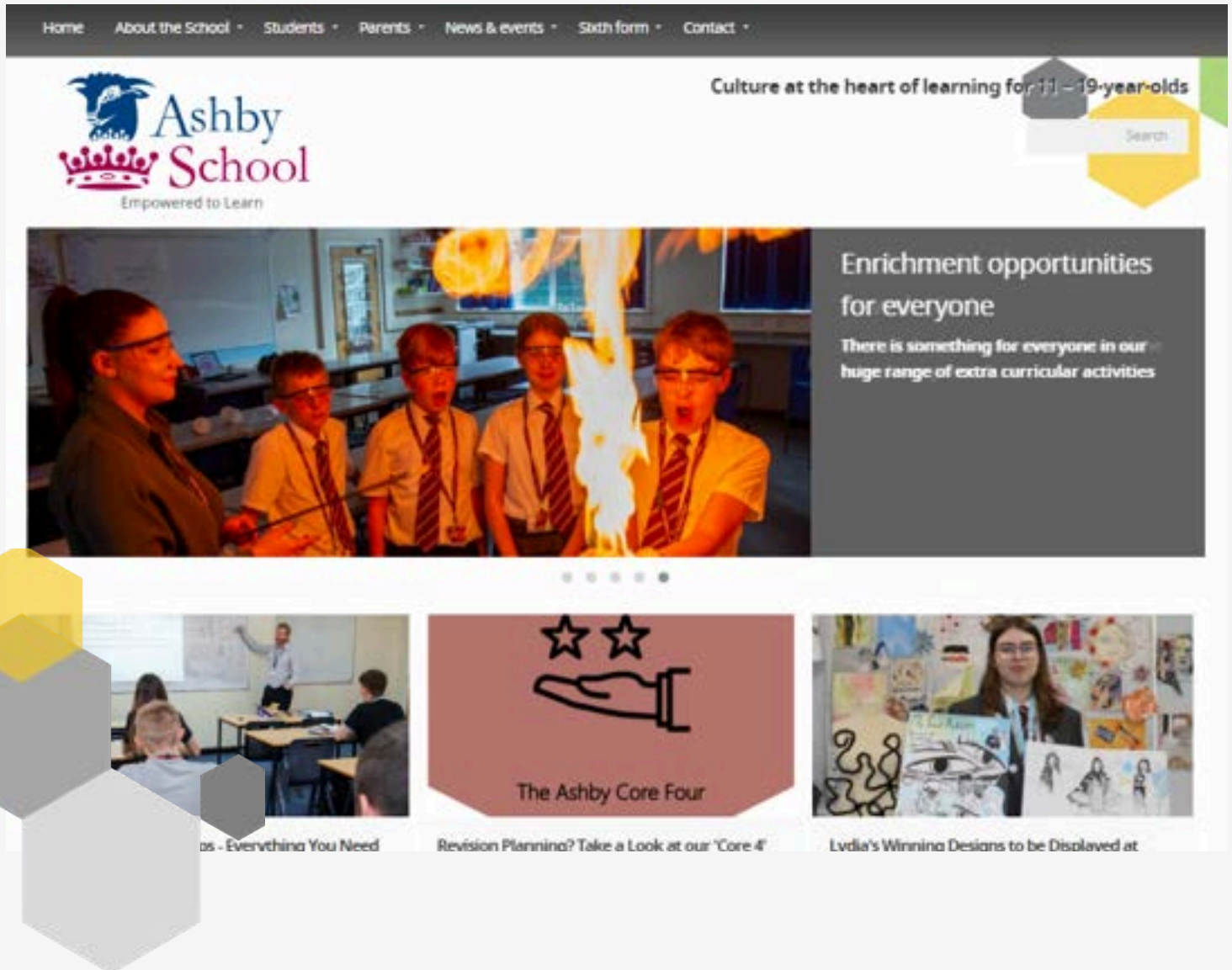
Jacket Potato £1.20

Vegetable/Potato sides 40p each

Assorted drinks 60p to 85p

Hot dinners are varied with examples including Roast Dinners, Lasagne, Spaghetti Bolognese, Curries, Fajitas and Vegetarian dishes.

The school Website



Ashby School has its own website where you (and your parents/carers) will be able to find lots of information about life at Ashby School. There is a search feature that you can use to find what you need more easily.

Anything is Possible

Type this web address into your web browser:

www.ashbyschool.org.uk

Try to find out the answers to the questions below.

1. What is the name of the Headteacher at Ashby School?
2. What is the slogan for Ashby School?
3. What is name of the Ashby School Instagram account?
4. What is the name of the system that parents can use to pay online for school meals and trips?
5. What is the the fortnightly newsletter called?
6. When was the school formed?
7. What is a Year Team Leader?
8. Where can you purchase school uniform?
9. What extra curricular activities can you do on a Monday?
10. What image appears on the school badge?





Managing tricky situations

Situation

Feeling

How would you feel if this happened to you?

You don't understand your homework. No one is able to help at home. It is due in the day after tomorrow.

You have a big falling out with your best friend. You have been friends since Primary School.

You are in a lesson and you are finding the work difficult.

You have lost the brand new rugby boots that your parents bought you for your birthday.

Another student is mean to you at school. They begin to send you unkind messages on social media.

Moving to a new school can be tricky and everyone needs help sometimes.
Have a look at these worries and think about what you might suggest as a solution.

Problem solving What could you do?	Asking for help Who would you ask? What would you like them to do?



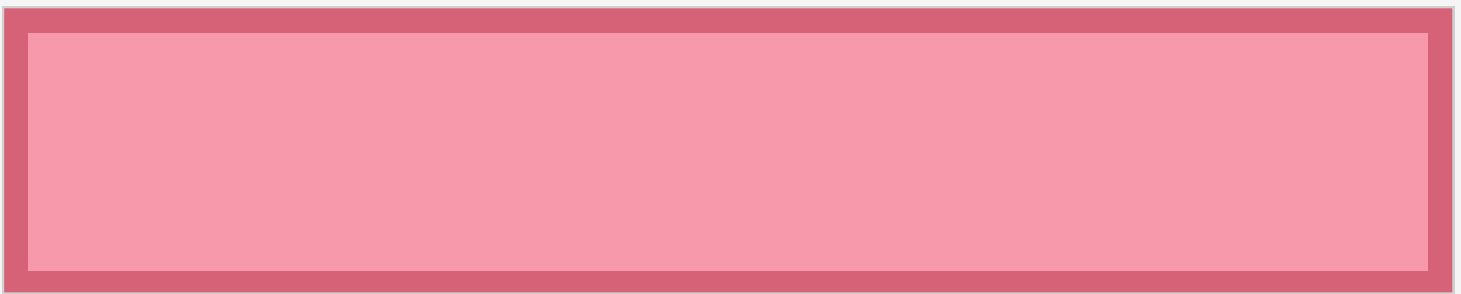
Question time

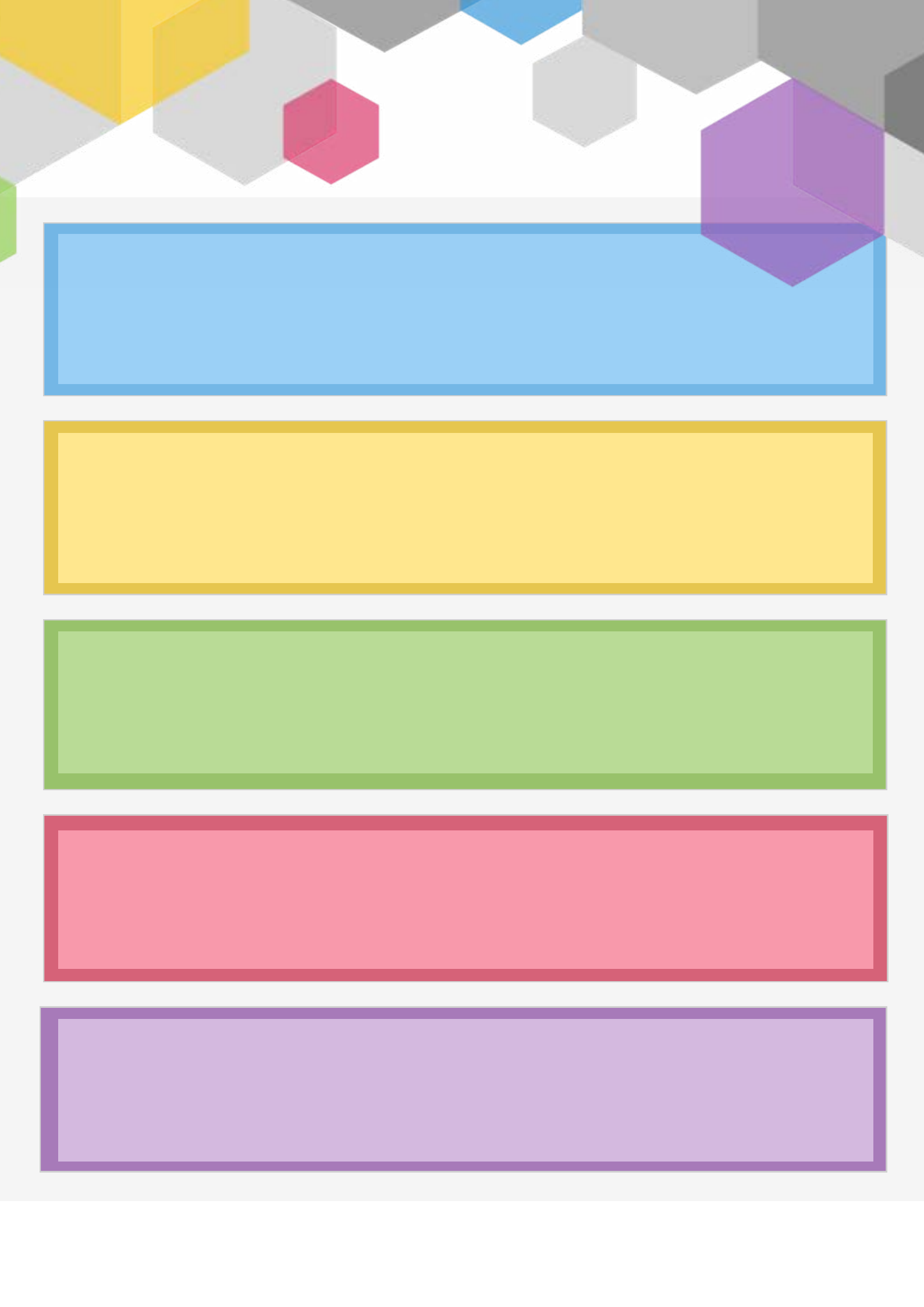


Use this space to write down any questions that you have about Ashby School.

Think about who could help you to answer these queries?

Can you answer them all by the start of the new school year?







Nottingham Road
Ashby de la Zouch
Leicestershire
LE65 1DT
01530 413748
enquiries@ashbyschool.org.uk
ashbyschool.org.uk

Term time opening hours
Monday - Friday 08:00 to 16:00

Ashby School is part of the
LiFE Multi Academy Trust



Anything is *Possible*