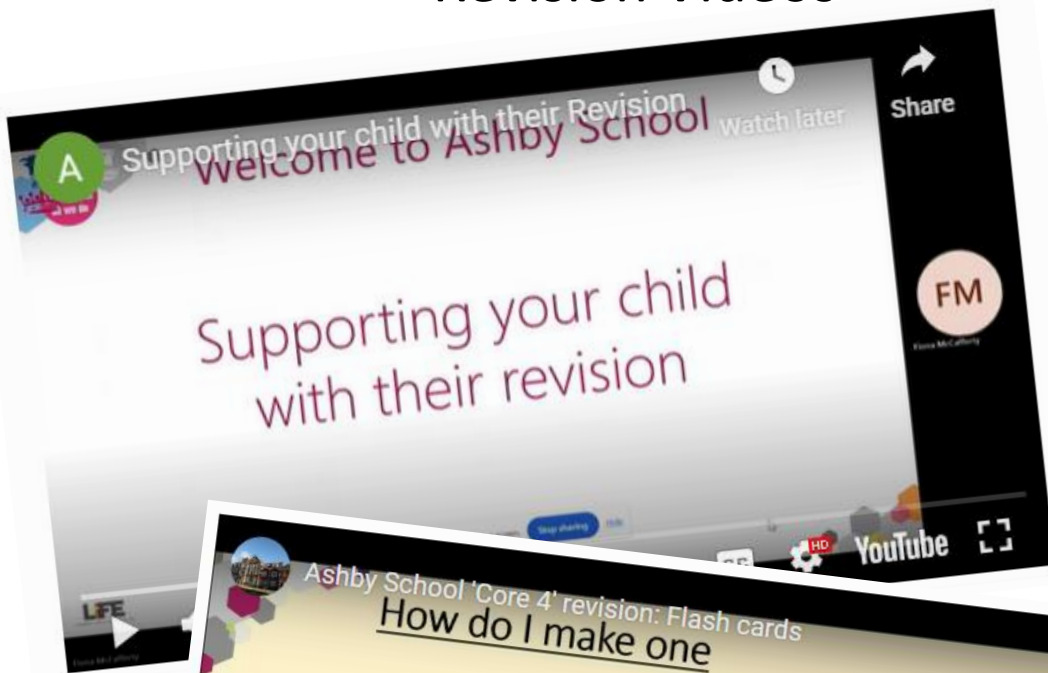


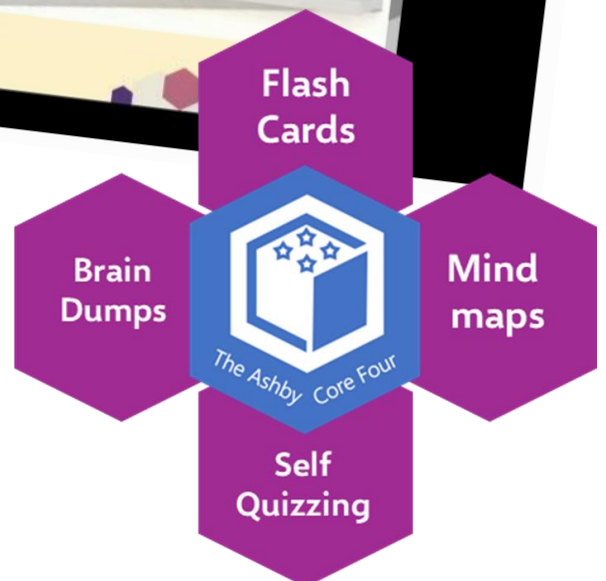
# Empowered to Succeed

## Focus of the week: Revision Videos



The school website features useful videos on how to support your child with revision.

They also break down the Ashby Core 4 Revision techniques and show you how you can use these techniques.



# THE ONE ABOUT MOBILE PHONES

@inner\_drive | www.innerdrive.co.uk

## THE STUDY

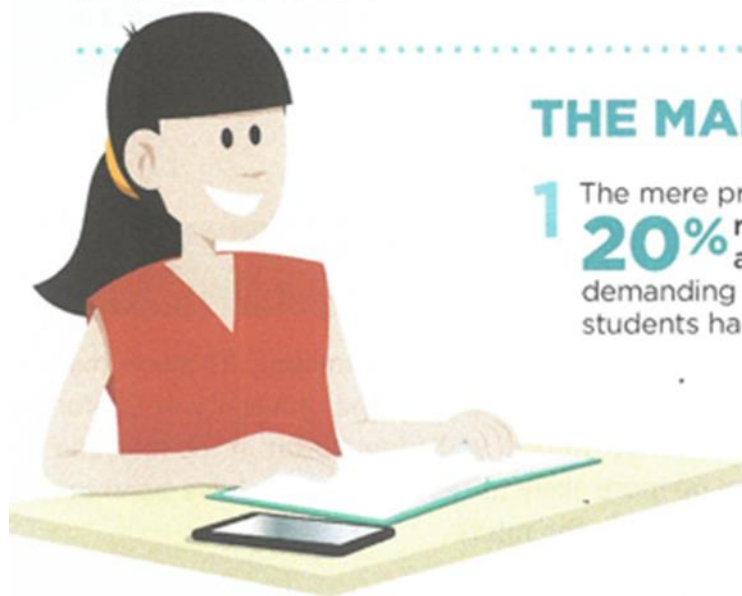
Mobile phones are a part of everyday life. They have the power to connect people and can be great tools for learning. Most people have their mobile phone next to them for large parts of the day. But is there a darker side to mobile phones? Can the mere presence of a mobile phone negatively affect student performance?

To answer this question, researchers had students complete a concentration task with either a mobile phone or a notepad on the table near them. The students didn't use the phone during the experiment, it was just within their eye-line.

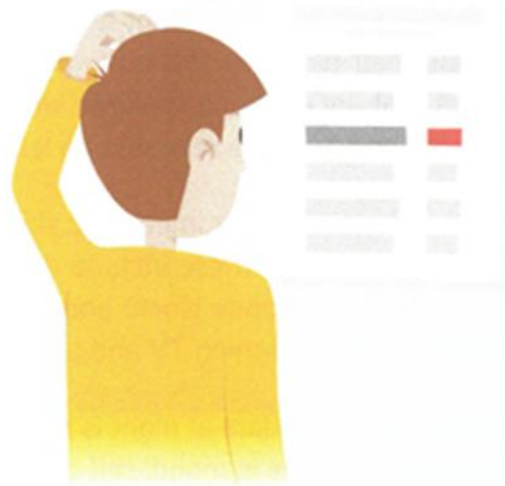
To gather further information, the researchers had students complete a range of questionnaires about themselves and also ran the experiment twice, once with someone else's phone near them and once with their own phone.

## THE MAIN FINDINGS

- 1 The mere presence of a mobile phone led to a **20% reduction in attention, concentration and performance** in tasks that were demanding and complex (i.e., ones that students had to think hard about).



- 2 Students performed worse in these tasks, regardless of whether they could see their own phone nearby or someone else's.



- 3 This reduction in performance was found to be true regardless of the student's gender, age, how much they normally used their own phone or how attached they said they felt to it.



# Empowered to Succeed

## Afterschool Revision

Monday	Tuesday	Wednesday	Thursday	Friday
9th February	10th February	11th February	12th February	13th February
Day 1	Day 2	Day 3	Day 4	Day 5
<b>Geography</b> H2 MGR	<b>Psychology</b> H7 MGE  Development- early brain development, neural structures, nature & nurture	<b>History</b> H2 CLA  The end of Tsardom	<b>Independent Study</b> Sparx Maths Seneca GCSE Pod	
<b>Computing</b>  M10 LKN  Exam technique	<b>English</b>  All the same approach JRU E7 ERE E6  Paper 1 LANG Q1, Q3 and Q4	<b>Maths</b>  M5                  Past Paper Club		
<b>Art</b> A1 and A2	<b>Graphics</b> D1 NEA			
	<b>Music and Media</b> A5 and A3			

## Lunchtime



**French fun club - Mon Week A Lunchtime**  
For higher grammar revision and listening.  
Bring lunch. **12:25 - 12:50.**

- Food Prep NEA – **Monday and Tuesday lunchtimes D2**
- Graphics NEA – **Tuesdays in D1**

