

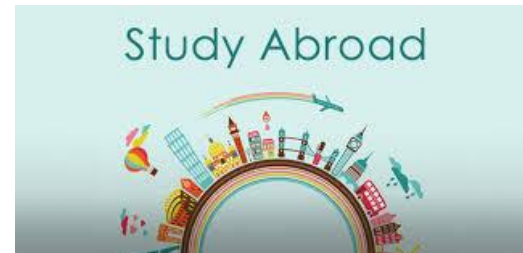
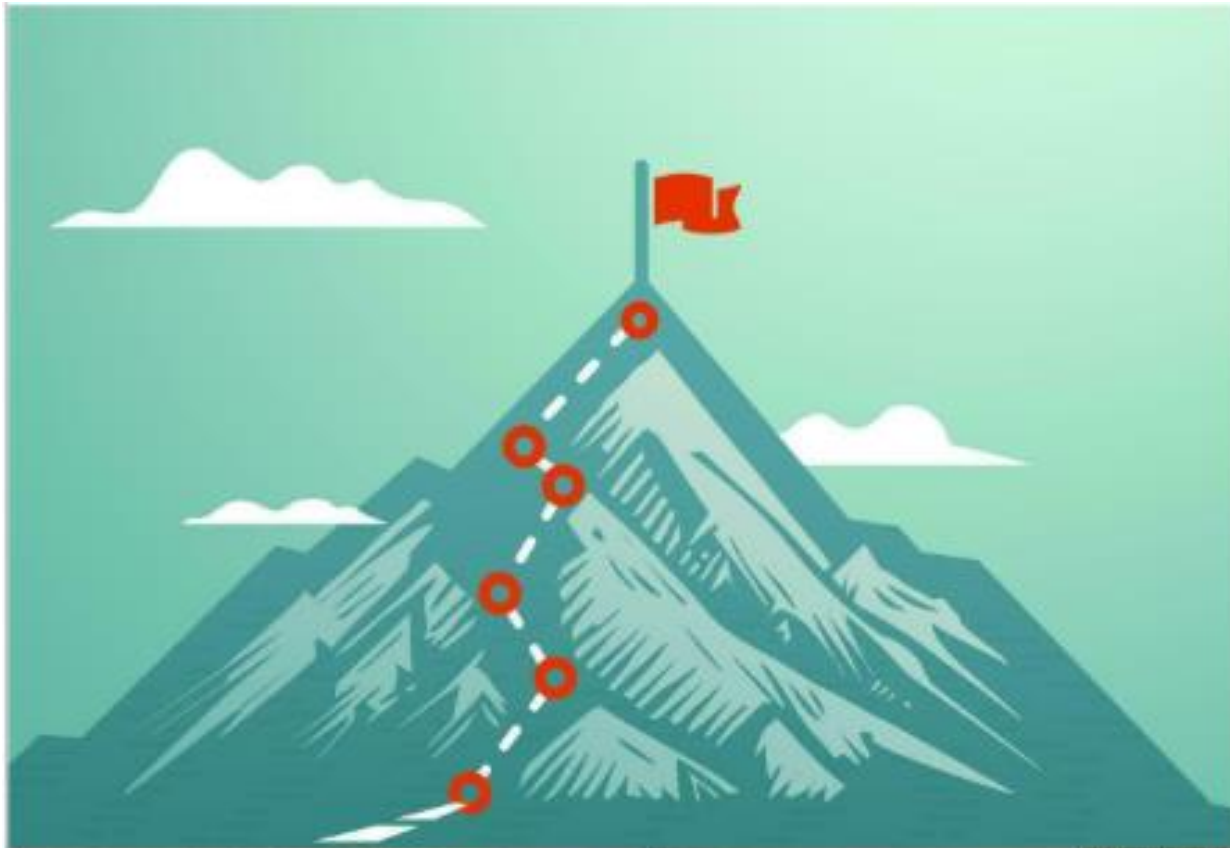


# Ashby Sixth Form

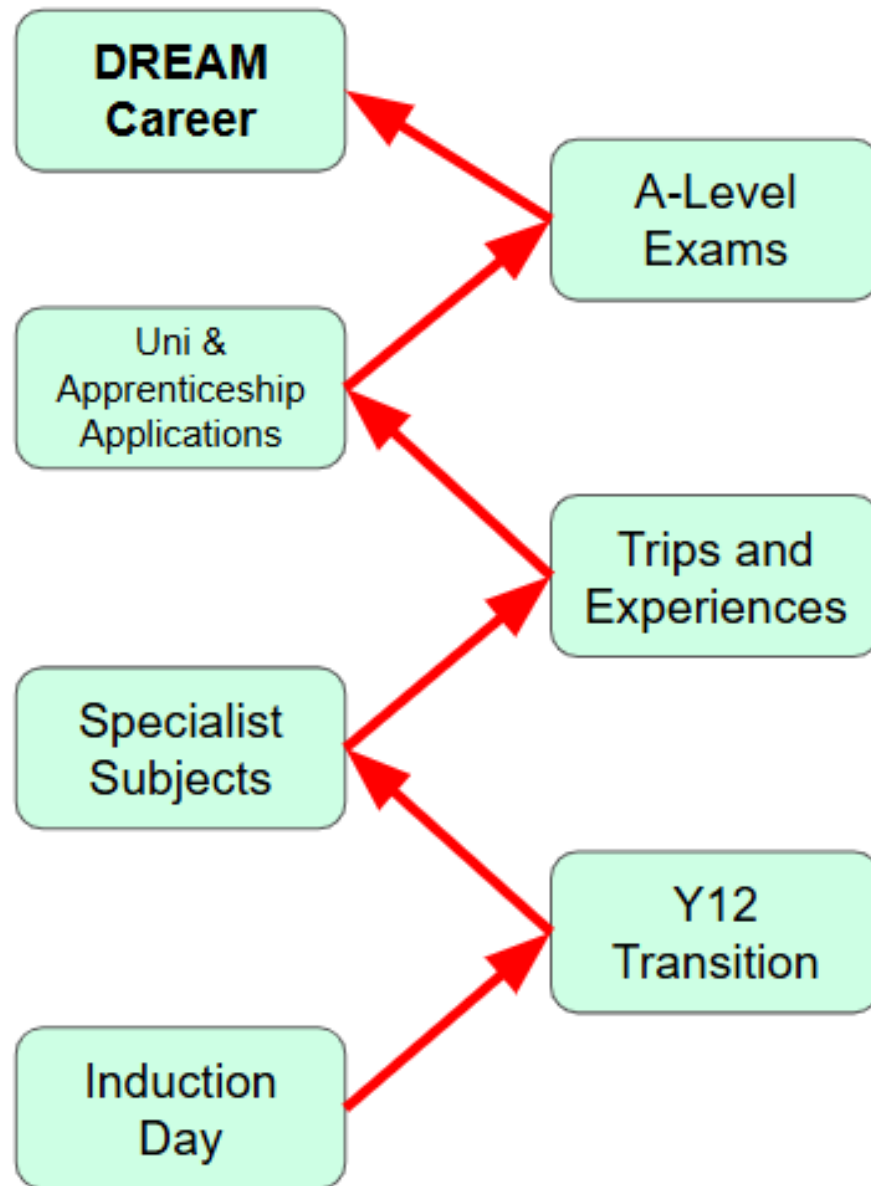
Anything is Possible



# The Start of an Exciting Journey!



# Sixth Form Journey



# The Team Supporting You:

**Director of  
Sixth Form**

Mr Talbot

**Year Team  
Leader Y12**

Miss Clapton

**Year Team  
Leader Y13**

Mr Tsang

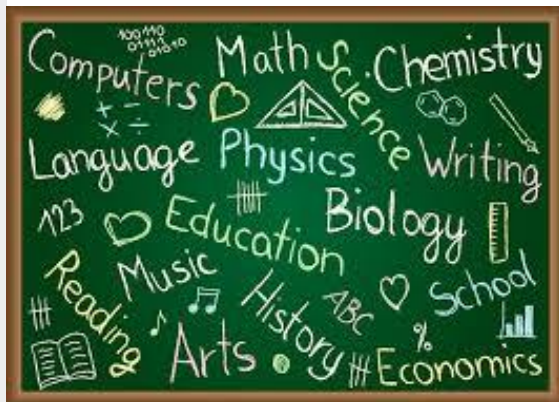
**Assistant  
Year Team  
Leader**

Mrs Carney

**Sixth Form  
Reception**

Mrs Warriner

**Sixth Form CREW Leaders**



**Our VISION:** A fully inclusive Sixth Form where all students are empowered to become independent, self-motivated learners, ready to thrive in life beyond Ashby Sixth Form





Show  
*R*espect



Accept  
*R*esponsibility



Build  
*R*esilience



## A bit about us:

- A very large school with 1675 students
- Over 500 of those students are in the Sixth Form (one of the largest Sixth Forms in Leicestershire)
- This means that you are never alone and will make friendships that will last a lifetime
- BUT it also means that good communication is key! **IT IS AN EXPECTATION THAT YOU WILL CHECK YOUR SCHOOL EMAIL DAILY**
- We pride ourselves on the support we offer you to reach your potential and be the best that you can be
- The Sixth Form is VERY successful
- There are LOTS of opportunities, but you MUST get involved
- We have students who succeed both academically and in a large number of areas outside of academic work
- This results in a springboard for progression (to Higher Education, Apprenticeships or Employment)

## How it all works:

For every subject you will have **9 HOURS (9 LESSONS)** allocated a fortnight (we operate a 10 day timetable) plus **1 LESSON of Personal Development** and **1 LESSON of Extended CREW**

You will also sign up to a compulsory **lesson a week** of **ENRICHMENT** (more details when you start in September!)

That makes 29 hours a fortnight > This leaves you with **21 HOURS** of non-contact time

If you are to be successful you **MUST** make good use of this time:

- Allocate time for each subject
- Use the sixth form centre / study spaces / free rooms / the library to study
- The more you do in school the less you will need to do out of school

**SUPERVISED STUDY** is our way of helping you with this and forms part of our curriculum (this will start after October half term)

High **ATTENDANCE** is crucial

## **DURING LESSON TIME**

- These areas should be QUIET STUDY AREAS
- Mobile phones should only be used for study purposes

## **DURING BREAK / LUNCH**

- Feel free to socialise / purchase food from the Sixth Form Dining Room
- No fast food allowed



We expect you to dress as if you are working in a business/office environment

- Footwear
- Trousers
- Skirts
- Dresses
- Tops
- Outdoor Jackets
- Jewellery
- Hair Colour



## High Level of Motivation



- What is your goal?
- What steps do you need to take to reach that goal?
- How are you going to compete and make yourself stand out?

## Continued Commitment



- What routine is going to enable you to be successful?
- How are you going to ensure you keep to this routine?
- INDEPENDENT STUDY is essential!

## Network of Support



- What support are you going to need?
- Who is there to support you?
- Who can you turn to when things don't go to plan?

- Attendance to registration (8.40-9am) is **COMPULSORY EVERY DAY**
- Get to know your CREW Leader
- Get to know your peers
- Seize opportunities for leadership within form
- Horizontal forms give us an exciting opportunity to make CREW something that adds value to your Ashby School experience
- We want you to value your 20 minutes of tutor time
- We want you to understand why you are doing activities
- We want to get you 'work ready' / Teach employability skills

- Enrichment
- Extra Curricular activities
- Trips
- Skills For Success
- Work Experience
- Interform competitions



You get out what you put in!

- Wrap around support – none teaching Year Team Leader (open door policy)
- **CREW leader** – 1<sup>st</sup> point on contact and someone you see daily
- Other services I work alongside:
  - School counsellors, teen health, school wellbeing lead, CAMHS
- I am here to support all aspects of your wellbeing along with those mentioned above but I will always have high expectations of you!

From next year, Students are encouraged to bring in a suitable device of their own that they can work on.

The rationale is that by utilising your own device, these can be used both during lessons (where instructed) and outside of the classroom in your study time.

We want students to be independent in their studies.

If you do not have a suitable device, you will be able to loan one on a half termly basis from the school.



A minimum of 5 GCSE's (or equivalent) Grade 4 or above.

Grade 4 or above in English Language/Literature and Mathematics.

Individual subject requirements must be met.

Students selecting more than one from Maths, Further Maths, Biology, Chemistry & Physics must also consider the following:

- Two from the list > Need average points score of 4.9 or more
- Three from the list > Need average points score of 6 or more

Attendance of 95% or higher

Choose subjects you **ENJOY**

Choose subjects in which you can **SUCCEED**

Choose subjects which are relevant to **FUTURE** plans

Choose subjects which suit your **STYLE** of working

Choose subjects that are **COMPATIBLE**

**Thursday August 20th**

## **CURRENT ASHBY STUDENTS**

Collect results (Sports Hall) at designated time

Hopefully – You have met the overall entry and subject specific requirements - Congratulations you can confirm your place using the online QR code **BEFORE YOU LEAVE!**

If you have not and you would like to discuss your place in Sixth Form you may be able to speak to someone there and then or you will need to make an appointment for later that day

## **NEW TO ASHBY STUDENTS**

New students to Ashby to supply us with confirmation of GCSE results VIA EMAIL on Thursday 20th August by 2pm (following this, students who have not confirmed will be removed from our lists)

**If you don't meet subject requirements you will be asked to make an appointment for later that day**

## **ALL STUDENTS**

If you have changed your mind with regard the subjects you have selected you may make a change **BUT** this will be dependent on there being space – Again appointments available later that day if you need to talk things through

Money to support YOU whilst you study

BUT there are conditions.....

Letter will be given out at the start of the academic year >  
Please **SHARE** with parents/carers



Some of you will have received Access Arrangements for your GCSEs.

These DO NOT automatically transfer over.

Instead, we will need your new teachers to collect evidence so that we can collate this and ensure you get the access arrangements that you require.

Therefore, so we can get the process started straight from Sept, if you did have any access arrangements for GCSEs, you **MUST** collect a form at the end of this assembly and fill it in.



- New to Ashby School students who have been given an ID Card need to return this to the Sixth Form Office at the end of the day
- E Mail with regard next steps later this week
- REMEMBER THAT SCHOOL STARTS FOR Y12 STUDENTS ON Tues 1<sup>st</sup> SEPTEMBER

**On behalf of all the staff at Ashby School we hope that you have an enjoyable and informative and reassuring induction day**

**REMEMBER ANYTHING IS POSSIBLE BUT YOU ARE IN THE DRIVING SEAT !!! 😊**